



Open Collaborative Research: Intel's Lablets

Andrew A. Chien

Vice President of Research

June 27, 2006

Intel Research

Driving off-roadmap, high-impact exploratory research



Seattle

Cambridge



Pittsburgh



Berkeley



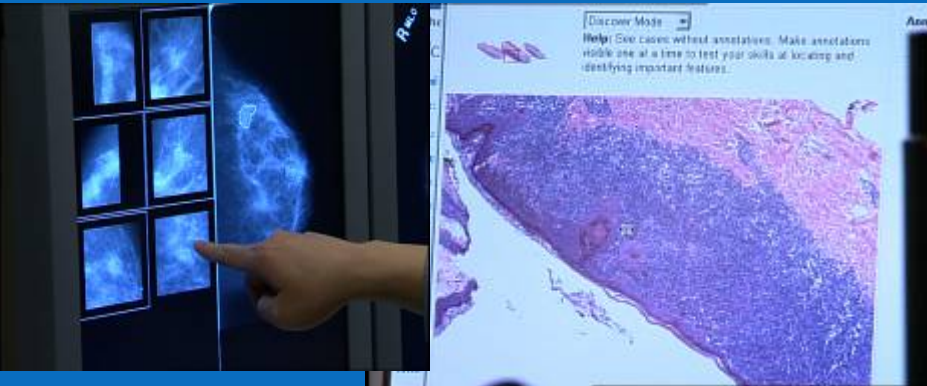
- Network of Lablets
- Co-located with top Universities
- Connection to Research Community

Tablets – Key Elements

- Open Collaborative Model –
 - Allow People and Ideas to flow freely
 - Open models for publication and IP
 - Interaction facilitated by physical locality and directors
- Active Engagement with university communities
 - Large numbers of joint projects
 - Intel participants in University projects, University participants in Intel Projects
 - => and everything in between
 - Internship programs – often aligned with PhD projects

Example Projects

Diamond Non-Indexed Image Search: Assisting in Breast Cancer Diagnosis



Long Distance Wi-Fi: Enabling Eye Care in Rural India



Long Distance Wi-Fi

Aravind Eye Care System at Rural Vision Centers



IR Pittsburgh, CMU, UPMC, Univ Pittsburgh



IR Berkeley, UCB TIER (Technology and Infrastructure for Emerging Regions), Aravind Eye Hospital, NSF



An Expansive View

- Labeled are foci for collaboration with the entire research community
 - not just local universities
 - Broad research collaborations, faculty collaboration, intern sourcing
 - Branching out to multiple institutions
 - => Come and collaborate
- Open Collaborative Model
 - Reach beyond a single institution
 - Other corporations are Emulating

Intel Research



Seattle

Cambridge



Pittsburgh



Berkeley



=> Growing Synergy and Connection with the Research Community